

LÍNGUA ESTRANGEIRA: Inglês

TEXT 1

Skip the Steak

By Bryan Walsh

Which is responsible for more global warming: your BMW or your Big Mac? Believe it or not, it's the burger. The international meat industry generates roughly 18% of the world's greenhouse-gas emissions—even more than transportation—according to a report last 05 year from the U.N.'s Food and Agriculture Organization. Much of that comes from the nitrous oxide in manure and the methane that is, as the New York *Times* delicately put it, "the natural result of bovine digestion." Methane has a warming effect that is 23 times as great as that of carbon, while nitrous oxide is 296 times as great.

10 There are 1.5 billion cattle and buffalo on the planet, along with 1.7 billion sheep and goats. Their populations are rising fast, especially in the developing world. Global meat production is expected to double between 2001 and 2050. Given the amount of energy consumed raising, shipping and selling livestock, a 16-oz.T-bone is like a Hummer on a plate. If you switch to vegetarianism, you can 15 shrink your carbon footprint by up to 1.5 tons of carbon dioxide a year, according to research by the University of Chicago. Trading a standard car for a hybrid cuts only about one ton—and isn't as tasty.



DAVID GRAHAM / GALLERY STOCK

<http://www.time.com>

RESPONDA AS QUESTÕES 1 E 2 **EM INGLÊS** COM BASE NO **TEXTO 1**. RESPOSTAS **EM PORTUGUÊS NÃO SERÃO ACEITAS**.

PRIMEIRA QUESTÃO

Considering the text you have just read, what is implied by the title "Skip the Steak"?

SEGUNDA QUESTÃO

How can you compare the effects of carbon and methane on global warming?

TEXT 2

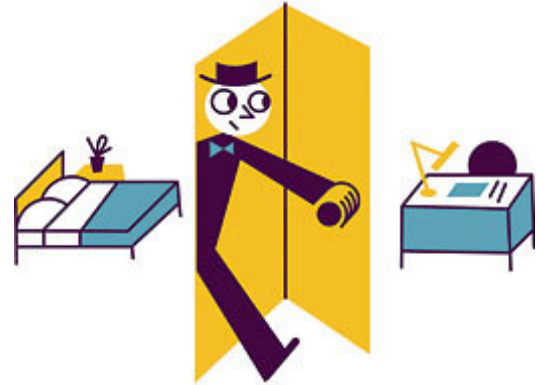
Let Employees Work Close to Home

By Coco Masters

Sitting in gridlock wastes your time and the planet's fuel. The only solution, it seems, is to move your home next to the office. But what if you could move the office a little closer to home? That, in essence, is the concept called proximate commuting. It works best for companies with multiple locations in one metro area.

Gene Mullins, a software developer in Seattle, created a program that helps firms slash the time employees spend driving by matching them with work closer to home. Mullins did studies for Starbucks, Key Bank, Boeing and, most recently, Seattle's fire department. He found that only 4% of the firefighters worked at the station closest to their home; some commuted 145 miles each way. At Boeing, daily commutes of its 80,000 Puget Sound employees total 85 circumnavigations of the earth. Using Mullins'

program, some Key Bank branches reduced commutes of some workers 69%. Still, only about 20% of its employees work at the branch closest to their home, Mullins says. Yet escaping rush-hour traffic is its own reward. "For the same pay and the same job, who wouldn't want a shorter commute?"



GREG MABLY FOR TIME

<http://www.time.com>

RESPONDA AS QUESTÕES 3 E 4 **EM PORTUGUÊS** COM BASE NO **TEXTO 2**. RESPOSTAS **EM INGLÊS** NÃO SERÃO ACEITAS.

TERCEIRA QUESTÃO

How did Mullins contribute to "proximate commuting"?

QUARTA QUESTÃO

Based on the text, what can be said about the people who work at Boeing?